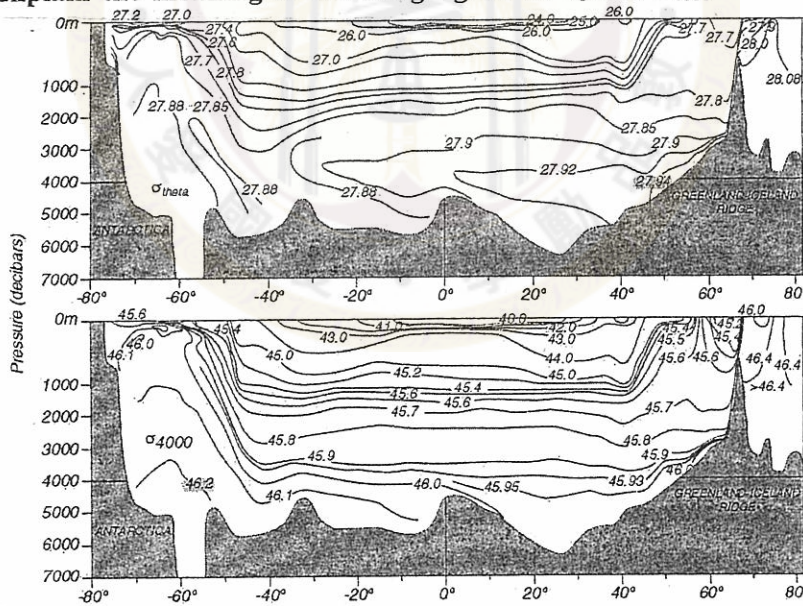


Physical Oceanography  
物理海洋學(A)  
每題 20 分

- 1 If the outflow of Mediterranean water to the North Atlantic has salinity 38.3, and total volume transport is 0.79 Sv, the inflow of the North Atlantic water to Mediterranean is 36.2, and there is deficiency of fresh water for Mediterranean about 0.046 Sv, then how much is the inflow rate?
- 2 Describe the location, direction and importance of five major ocean currents in the North Pacific.
- 3 If the absorption coefficient of blue light in the interior of North Pacific is 0.02/m, what is the ratio of blue light intensity at 500 m, vs. that at the surface? (write down the equation is sufficient)
- 4 Explain the meaning of following figure on  $\sigma_\theta$  and  $\sigma_{4000}$



5. What are the characteristics of inertial motion?

試題隨卷繳回