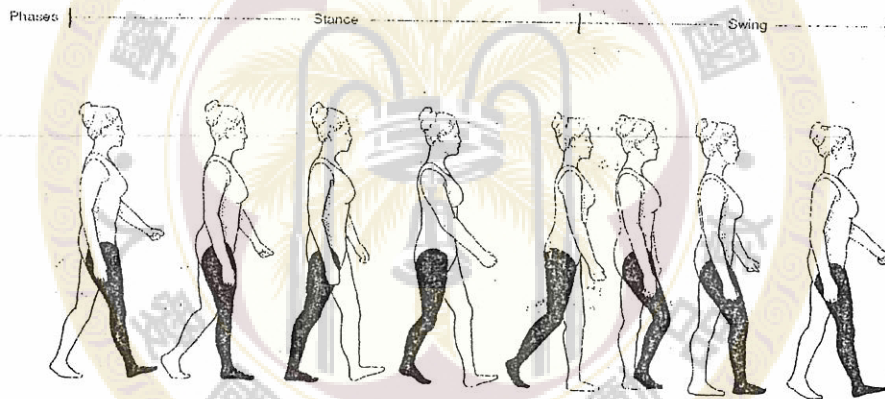
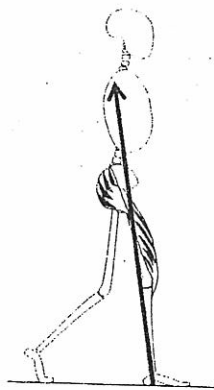


1. A person stands up from a chair and then sits down on the same chair. Please describe the osteokinetic and arthrokinetic motions occurring at the knee joint and the muscle actions for accomplishment of these motions. (30%)
2. Please describe the components of the open- and closed-chained motions of the subtalar joint from the triplantar-motion points of view. (10%)
3. 何謂人體生物力學中的 center of mass (5%) 和 center of pressure (5%)? 請加上圖解說明 (10%); 另說明其兩者在走路時和站立時與平衡的關係 (10%)。
4. 請就以下圖片簡述步態分析的分期(8%)、與髋、膝、與踝關節相關肌群於各分期的收縮與活動(12%)。



5. 請就以下圖片簡述於此一狀態中，地面反作用力(黑色箭頭)與髋、膝關節力矩之關係(10%)。



試題隨卷繳回