

請依照題號依序答題，需詳列解題過程，並註明解題所使用的變數及公式。
假設檢定需說明其虛無假設與對立假設。

1. (20%) The number of arrivals to a wilderness park is found to be Poisson distributed with a mean of 2.5 camping groups per day; and, the travel time for the arrivals are normally distributed with a mean of 40 min and a standard deviation of 12.5 min.
 - (1) On a particular day, what is the probability that no groups arrive at the park? What is the probability that between one and three groups arrive? What is the most likely number of arriving camping groups? (hint: $e^{-2.5} = 0.0821$)
 - (2) What is the probability that a randomly selected arrival's journey is longer than 1 hr?

2. (10%) An urban geographer interested in the proportion of residents in a city who moved within the last year conducts a survey. Summary statistics reveal 27 of the 270 people surveyed changed residences. What are the 95% limits on the true proportion of people who moved in the city?

3. (20%) Household surveys of residents in a suburban neighborhood A have consistently found the proportion of residents taking public transit to be 0.16. The city council, at the urging of neighborhood residents, increased the bus service to this neighborhood.
 - (1) The council vowed to discontinue the service if there was not an increase in patronage. Three months after the introduction of the new service, the council hired a consultant to survey $n = 200$ residents and determine their current modes of transportation. Forty-two residents indicated they took public transit. Should the council continue the service with an error probability of 5%?
 - (2) The residents in the other neighborhood B asked for increasing bus service because they believed that the proportion of residents taking public transit in B is higher than that in A . The council also hired a consultant to survey $n = 100$ residents in B and found 24 residents taking public transit. Should the council increase the bus service with an error probability of 5%?

4. (15%) A survey investigated the samples of children from Australia, Canada, Singapore and Britain; in terms of the amount of TV they watch. According to the results of this survey (as follows), **can we say that the amount of TV watched is dependent of country residence?** ($\alpha = 0.05$)
(It needs to describe the null and alternative hypothesis of the statistical analysis)

Amount of TV	Country				Total
	Australia	Canada	Singapore	Britain	
Low	23	25	28	28	104
Medium	32	34	39	33	138
High	28	30	40	35	133
Total	83	89	107	96	375

見背面

5. (15%) We collected the dataset from the Department of Education to investigate the predictors of elementary school's academic performance. We performed a multiple regression analysis using academic performance of a school (api00) as the outcome variable and the variables acs_k3, meals and full as predictors. These measure the average class size of a school (acs_k3), the percentage of students receiving free meals (meals) - which is an indicator of poverty, and the percentage of teachers who have full teaching credentials (教師證書) (full). We expect that better academic performance would be associated with lower class size, fewer students receiving free meals, and a higher percentage of teachers having full teaching credentials. The statistical report is as follows. Please explain the following terms in the report and how to use them for interpreting the model results, including:

- (1) R, R-square, and adjusted R-square
- (2) ANOVA, F statistic and the significance (describe the null hypothesis of ANOVA)
- (3) Regression coefficients
- (4) Standardized coefficients
- (5) t statistic and the significance (describe the null hypothesis of the t test)

Model Summary

Model	R	R Square	Adjusted R Square	Std. Error of the Estimate
1	.821(a)	.674	.671	64.153

a Predictors: (Constant), FULL, ACS_K3, MEALS

ANOVA(b)

Model	Sum of Squares	df	Mean Square	F	Sig.	
1	Regression	2634884.261	3	878294.754	213.407	.000(a)
	Residual	1271713.209	309	4115.577		
	Total	3906597.470	312			

a Predictors: (Constant), FULL, ACS_K3, MEALS
b Dependent Variable: API00

Coefficients(a)

Model	Unstandardized Coefficients		Standardized Coefficients	t	Sig.	
	B	Std. Error	Beta			
1	(Constant)	906.739	28.265		32.080	.000
	ACS_K3	-2.682	1.394	-.064	-1.924	.055
	MEALS	-3.702	.154	-.808	-24.038	.000
	FULL	.109	.091	.041	1.197	.232

a Dependent Variable: API00

接次頁

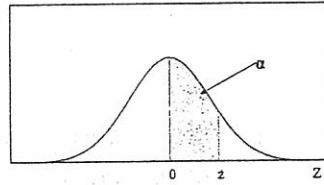
6. [20%] An university instructor uses different teaching methods on three separate classes. The instructor wants to assess the relative effectiveness of these methods by testing for a significant difference between the classes. The data on final grades are as follows.
- (a) Explain what kind of statistical methods can be used for exploring this issue.
 - (b) State the null and alternative hypothesis for this research in words and using mathematical notation.
 - (c) Calculate the statistic and make a decision about the null hypothesis. ($\alpha = 0.05$)

Method 1 for Class #A	Method 2 for Class #B	Method 3 for Class #C
21	28	19
19	28	17
21	23	20
24	27	23
25	31	20
20	38	17
27	34	20
19	32	21
23	29	22
25	28	21
26	30	23

見背面

標準常態累加機率值表

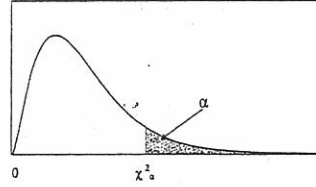
$$P(0 < Z < z) = \alpha$$



z	.00	.01	.02	.03	.04	.05	.06	.07	.08	.09
0.0	0.0000	0.0040	0.0080	0.0120	0.0160	0.0199	0.0239	0.0279	0.0319	0.0359
0.1	0.0398	0.0438	0.0478	0.0517	0.0557	0.0596	0.0636	0.0675	0.0714	0.0753
0.2	0.0793	0.0832	0.0871	0.0910	0.0948	0.0987	0.1026	0.1064	0.1103	0.1141
0.3	0.1179	0.1217	0.1255	0.1293	0.1331	0.1368	0.1406	0.1443	0.1480	0.1517
0.4	0.1554	0.1591	0.1628	0.1664	0.1700	0.1736	0.1772	0.1808	0.1844	0.1879
0.5	0.1915	0.1950	0.1985	0.2019	0.2054	0.2088	0.2123	0.2157	0.2190	0.2224
0.6	0.2257	0.2291	0.2324	0.2357	0.2389	0.2422	0.2454	0.2486	0.2517	0.2549
0.7	0.2580	0.2611	0.2642	0.2673	0.2704	0.2734	0.2764	0.2794	0.2823	0.2852
0.8	0.2881	0.2910	0.2939	0.2967	0.2995	0.3023	0.3051	0.3078	0.3106	0.3133
0.9	0.3159	0.3186	0.3212	0.3238	0.3264	0.3289	0.3315	0.3340	0.3365	0.3389
1.0	0.3413	0.3438	0.3461	0.3485	0.3508	0.3531	0.3554	0.3577	0.3599	0.3621
1.1	0.3643	0.3665	0.3686	0.3708	0.3729	0.3749	0.3770	0.3790	0.3810	0.3830
1.2	0.3849	0.3869	0.3888	0.3907	0.3925	0.3944	0.3962	0.3980	0.3997	0.4015
1.3	0.4032	0.4049	0.4066	0.4082	0.4099	0.4115	0.4131	0.4147	0.4162	0.4177
1.4	0.4192	0.4207	0.4222	0.4236	0.4251	0.4265	0.4279	0.4292	0.4306	0.4319
1.5	0.4332	0.4345	0.4357	0.4370	0.4382	0.4394	0.4406	0.4418	0.4429	0.4441
1.6	0.4452	0.4463	0.4474	0.4484	0.4495	0.4505	0.4515	0.4525	0.4535	0.4545
1.7	0.4554	0.4564	0.4573	0.4582	0.4591	0.4599	0.4608	0.4616	0.4625	0.4633
1.8	0.4641	0.4649	0.4656	0.4664	0.4671	0.4678	0.4686	0.4693	0.4699	0.4706
1.9	0.4713	0.4719	0.4726	0.4732	0.4738	0.4744	0.4750	0.4756	0.4761	0.4767
2.0	0.4772	0.4778	0.4783	0.4788	0.4793	0.4798	0.4803	0.4808	0.4812	0.4817
2.1	0.4821	0.4826	0.4830	0.4834	0.4838	0.4842	0.4846	0.4850	0.4854	0.4857
2.2	0.4861	0.4864	0.4868	0.4871	0.4875	0.4878	0.4881	0.4884	0.4887	0.4890
2.3	0.4893	0.4896	0.4898	0.4901	0.4904	0.4906	0.4909	0.4911	0.4913	0.4916
2.4	0.4918	0.4920	0.4922	0.4925	0.4927	0.4929	0.4931	0.4932	0.4934	0.4936
2.5	0.4938	0.4940	0.4941	0.4943	0.4945	0.4946	0.4948	0.4949	0.4951	0.4952
2.6	0.4953	0.4955	0.4956	0.4957	0.4959	0.4960	0.4961	0.4962	0.4963	0.4964
2.7	0.4965	0.4966	0.4967	0.4968	0.4969	0.4970	0.4971	0.4972	0.4973	0.4974
2.8	0.4974	0.4975	0.4976	0.4977	0.4977	0.4978	0.4979	0.4979	0.4980	0.4981
2.9	0.4981	0.4982	0.4982	0.4983	0.4984	0.4984	0.4985	0.4985	0.4986	0.4986
3.0	0.49865	0.49869	0.49874	0.49878	0.49882	0.49886	0.49889	0.49893	0.49897	0.49900
3.1	0.49903	0.49906	0.49910	0.49913	0.49916	0.49918	0.49921	0.49924	0.49926	0.49929
3.2	0.49931	0.49934	0.49936	0.49938	0.49940	0.49942	0.49944	0.49946	0.49948	0.49950
3.3	0.49952	0.49953	0.49955	0.49957	0.49958	0.49960	0.49961	0.49962	0.49964	0.49965
3.4	0.49966	0.49968	0.49969	0.49970	0.49971	0.49972	0.49973	0.49974	0.49975	0.49976
3.5	0.49977	0.49978	0.49978	0.49979	0.49980	0.49981	0.49981	0.49982	0.49983	0.49983
3.6	0.49984	0.49985	0.49985	0.49986	0.49986	0.49987	0.49987	0.49988	0.49988	0.49989
3.7	0.49989	0.49990	0.49990	0.49990	0.49991	0.49991	0.49992	0.49992	0.49992	0.49992
3.8	0.49993	0.49993	0.49993	0.49994	0.49994	0.49994	0.49994	0.49995	0.49995	0.49995
3.9	0.49995	0.49995	0.49996	0.49996	0.49996	0.49996	0.49996	0.49996	0.49997	0.49997
4.0	0.49996832									
4.5	0.49999660									
5.0	0.49999971									
5.5	0.49999998									
6.0	0.49999999									

卡方分配臨界值表

$$P(\chi^2 > \chi^2_\alpha) = \alpha$$

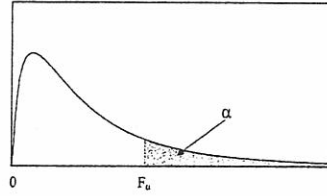


$\chi^2_{0.100}$	$\chi^2_{0.050}$	$\chi^2_{0.025}$	$\chi^2_{0.010}$	$\chi^2_{0.005}$	<i>df.</i>
2.705541	3.841455	5.023903	6.634891	7.879400	1
4.605176	5.991476	7.377779	9.210351	10.5965	2
6.251394	7.814725	9.348404	11.3449	12.8381	3
7.779434	9.487728	11.1433	13.2767	14.8602	4
9.236349	11.0705	12.8325	15.0863	16.7496	5
10.6446	12.5916	14.4494	16.8119	18.5475	6
12.0170	14.0671	16.0128	18.4753	20.2777	7
13.3616	15.5073	17.5345	20.0902	21.9549	8
14.6837	16.9190	19.0228	21.6660	23.5893	9
15.9872	18.3070	20.4832	23.2093	25.1881	10
17.2750	19.6752	21.9200	24.7250	26.7569	11
18.5493	21.0261	23.3367	26.2170	28.2997	12
19.8119	22.3620	24.7356	27.6882	29.8193	13
21.0641	23.6848	26.1189	29.1412	31.3194	14
22.3071	24.9958	27.4884	30.5780	32.8015	15
23.5418	26.2962	28.8453	31.9999	34.2671	16
24.7690	27.5871	30.1910	33.4087	35.7184	17
25.9894	28.8693	31.5264	34.8052	37.1564	18
27.2036	30.1435	32.8523	36.1908	38.5821	19
28.4120	31.4104	34.1696	37.5663	39.9969	20
29.6151	32.6706	35.4789	38.9322	41.4009	21
30.8133	33.9245	36.7807	40.2894	42.7957	22
32.0069	35.1725	38.0756	41.6383	44.1814	23
33.1962	36.4150	39.3641	42.9798	45.5584	24
34.3816	37.6525	40.6465	44.3140	46.9280	25
35.5632	38.8851	41.9231	45.6416	48.2898	26
36.7412	40.1133	43.1945	46.9628	49.6450	27
37.9159	41.3372	44.4608	48.2782	50.9936	28
39.0875	42.5569	45.7223	49.5878	52.3355	29
40.2560	43.7730	46.9792	50.8922	53.6719	30
51.8050	55.7585	59.3417	63.6908	66.7660	40
63.1671	67.5048	71.4202	76.1538	79.4898	50
74.3970	79.0820	83.2977	88.3794	91.9518	60
96.5782	101.879	106.629	112.329	116.321	80
118.498	124.342	129.561	135.807	140.170	100

見背面

F 分配臨界值表

$$P(F > F_{\alpha}) = \alpha$$



$v_2(d.f.)$	$v_1(d.f.)$								
	1	2	3	4	5	6	7	8	9
1	161.45	199.50	215.71	224.58	230.16	233.99	236.77	238.88	240.54
2	18.51	19.00	19.16	19.25	19.30	19.33	19.35	19.37	19.38
3	10.13	9.55	9.28	9.12	9.01	8.94	8.89	8.85	8.81
4	7.71	6.94	6.59	6.39	6.26	6.16	6.09	6.04	6.00
5	6.61	5.79	5.41	5.19	5.05	4.95	4.88	4.82	4.77
6	5.99	5.14	4.76	4.53	4.39	4.28	4.21	4.15	4.10
7	5.59	4.74	4.35	4.12	3.97	3.87	3.79	3.73	3.68
8	5.32	4.46	4.07	3.84	3.69	3.58	3.50	3.44	3.39
9	5.12	4.26	3.86	3.63	3.48	3.37	3.29	3.23	3.18
10	4.96	4.10	3.71	3.48	3.33	3.22	3.14	3.07	3.02
11	4.84	3.98	3.59	3.36	3.20	3.09	3.01	2.95	2.90
12	4.75	3.89	3.49	3.26	3.11	3.00	2.91	2.85	2.80
13	4.67	3.81	3.41	3.18	3.03	2.92	2.83	2.77	2.71
14	4.60	3.74	3.34	3.11	2.96	2.85	2.76	2.70	2.65
15	4.54	3.68	3.29	3.06	2.90	2.79	2.71	2.64	2.59
16	4.49	3.63	3.24	3.01	2.85	2.74	2.66	2.59	2.54
17	4.45	3.59	3.20	2.96	2.81	2.70	2.61	2.55	2.49
18	4.41	3.55	3.16	2.93	2.77	2.66	2.58	2.51	2.46
19	4.38	3.52	3.13	2.90	2.74	2.63	2.54	2.48	2.42
20	4.35	3.49	3.10	2.87	2.71	2.60	2.51	2.45	2.39
21	4.32	3.47	3.07	2.84	2.68	2.57	2.49	2.42	2.37
22	4.30	3.44	3.05	2.82	2.66	2.55	2.46	2.40	2.34
23	4.28	3.42	3.03	2.80	2.64	2.53	2.44	2.37	2.32
24	4.26	3.40	3.01	2.78	2.62	2.51	2.42	2.36	2.30
25	4.24	3.39	2.99	2.76	2.60	2.49	2.40	2.34	2.28
26	4.23	3.37	2.98	2.74	2.59	2.47	2.39	2.32	2.27
27	4.21	3.35	2.96	2.73	2.57	2.46	2.37	2.31	2.25
28	4.20	3.34	2.95	2.71	2.56	2.45	2.36	2.29	2.24
29	4.18	3.33	2.93	2.70	2.55	2.43	2.35	2.28	2.22
30	4.17	3.32	2.92	2.69	2.53	2.42	2.33	2.27	2.21
40	4.08	3.23	2.84	2.61	2.45	2.34	2.25	2.18	2.12
60	4.00	3.15	2.76	2.53	2.37	2.25	2.17	2.10	2.04
120	3.92	3.07	2.68	2.45	2.29	2.18	2.09	2.02	1.96
∞	3.84	3.00	2.60	2.37	2.21	2.10	2.01	1.94	1.88

試題隨卷繳回